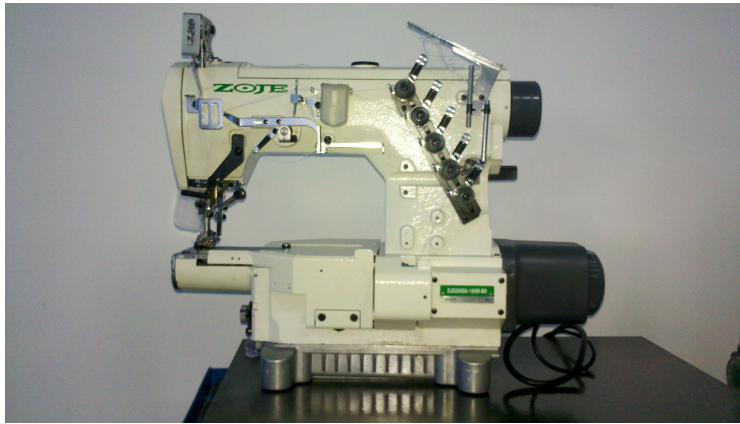


## ZJS2500A series 小筒绷缝机 Small tube flat seaming machine



### 简介

### 소개

筒身周长仅80mm，适合童装袖口缝纫；

Tube body circumference is only 80 mm, suitable for children's wear

短横筒及小筒结构方便缝纫；

Short horizontal tube and tube of small structure convenient sewing;

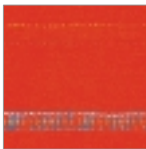
附件包配压骨、倒骨、折下摆装置，方便多种用途缝纫；

Seam covering, Pour the bone, Fold the bottom hem device, suit for many kinds of sewing

适用于童装袖口缝纫，也可广泛用于缝制针织内衣、运动衣裤、T恤衫、胸罩、束腰松紧带等各种弹性织物，种辅助件进行多功能之缝合。

It is suit for kid's clothes, Knitted underwear, Sports clothing, T-shirt, A bra, Waist elastic.

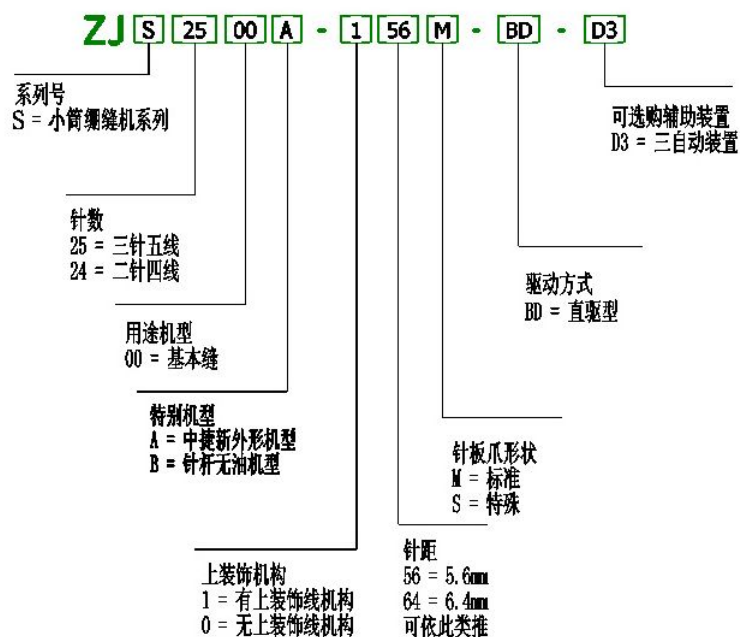
线迹 stitch



基本缝 The basic stitch

倒骨缝 Pour joint

技术参数 Technical parameters



S Small tube  
 25:5 threads 3 needles  
 24:4 threads 2 needles  
 Appliaction model  
 00: basic stitch  
 A: ZOJE appearance  
 B: Needle bar without oil  
 Decorate device  
 1:with  
 2:without  
 M:standard  
 needle gauge  
 56=5.6mm  
 64=6.4mm  
 S:special  
 BD:direct  
 optional attachment  
 D3:triple automatic device

型号 model	机针 needle	针数 Pin number	线数 Line number	针幅	针距 needle gauge	差动比 differential ratio	压脚提升高度 presser foot lifting height	最高缝速 Max speed range
ZJS2500A-156M-BD	UY128GBS11	3	5	5.6	1.2-4.0	1:0.7~1:1.4	7	4200
ZJS2500A-164M-BD		3	5	6.4				
ZJS2500A-156M-BD-D3		3	5	5.6				
ZJS2500A-164M-BD-D3		3	5	6.4				

### 选购配件

序号	附件名称 Attachment Name	型号 model	备注
1	自动剪线及自动抬压脚装置 Automatic trimming and automatic presser foot device	ZJS2500-E-UT/DST/WP	